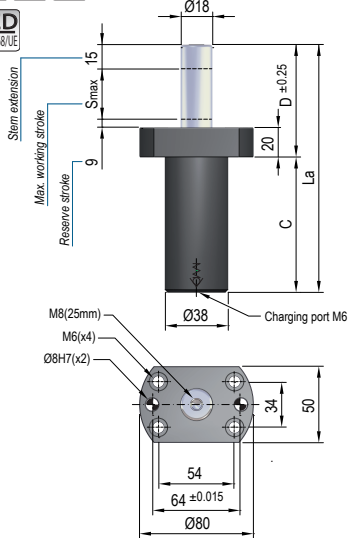


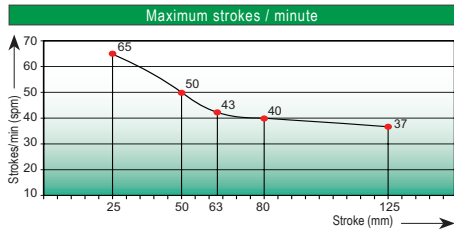
VDI SAFETY



PED
2014/68/EU



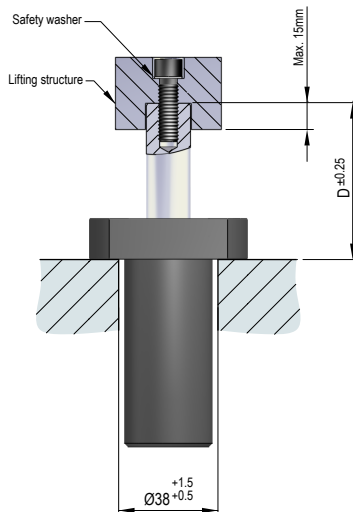
i Pressure medium	Nitrogen (N ₂)
Max. charging pressure	50 Bar
Min. charging pressure	25 Bar
Rod seal area	2,54 cm ²
Operating temperature	0°C - 80°C
Force increase by temperature	0,33 %/°C
Max. stem speed	1,6 m/s
Maintenance kit	Kit SL100



Code	Smax mm	La mm	C mm	D mm	Fa daN	90% F daN	100% Fc daN	P Bar	V l
TPSL 100x25	25	135	66	69	100 ±5% (20°C)	140	150	40 (20°C)	0,020
TPSL 100x50	50	185	91	94		130	135		0,040
TPSL 100x63	63	211	104	107		130	135		0,051
TPSL 100x80	80	245	121	124		130	135		0,064
TPSL 100x125	125	335	166	169		125	130		0,101

(Other strokes under order)

Mounting example



The stem is an extra 15mm long to facilitate attachment to the lifting structure.